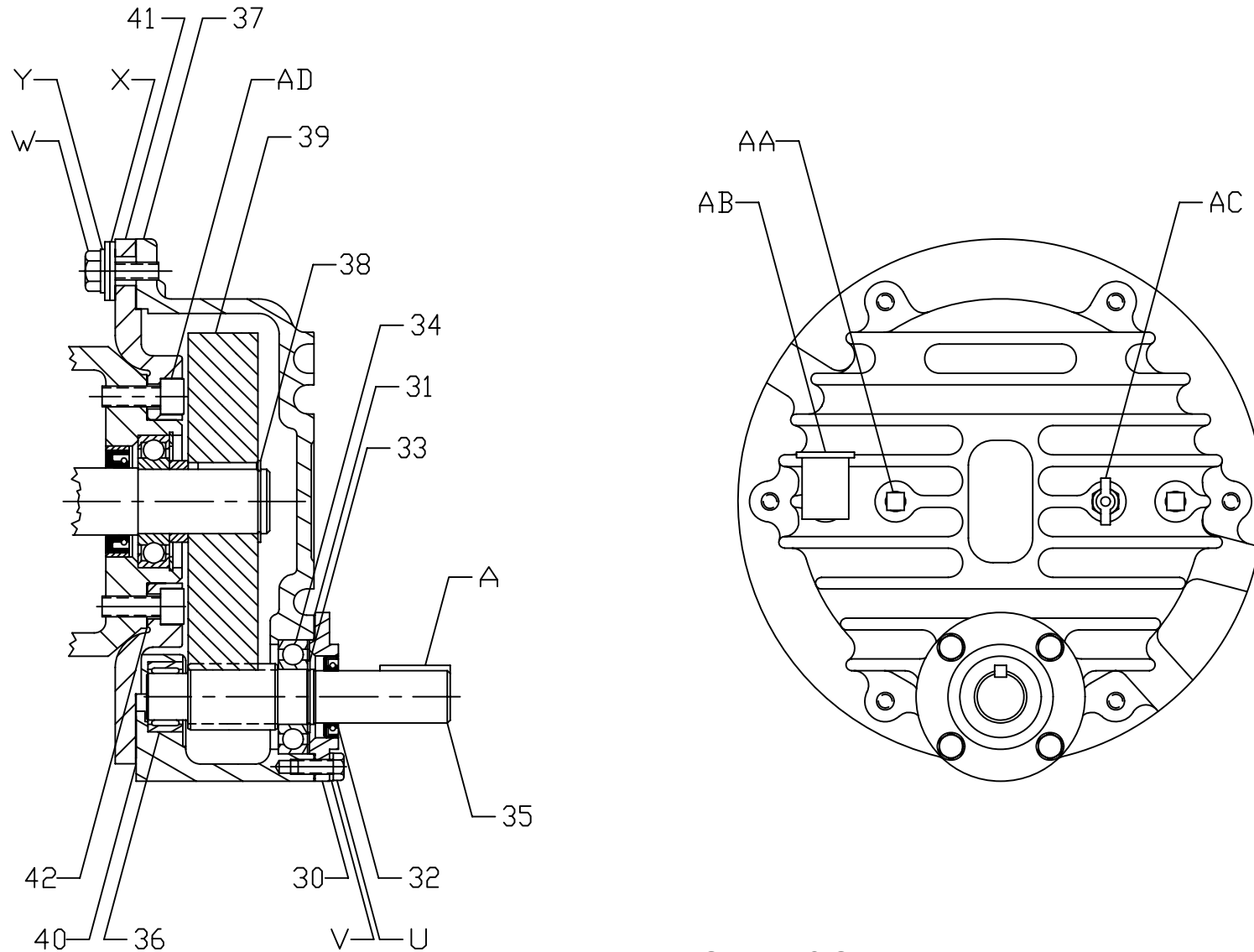


N41-3 ROPER 3632 - 3748 GEAR REDUCTION UNIT

Attaches to Sizes 32, 35, 43, 48 and 58 GHB Pumps

Three Ratios: 4.26:1 4.88:1 5.66:1



Tank Truck Service & Sales, Inc. Warren, Michigan
800-482-2678 www.tanktruckservice.com

N41-XXX-3

KEY NO.	DESCRIPTION	N41-426-3		N41-488-3		N41-566-3	
		QTY	PART NO.	QTY	PART NO.	QTY	PART NO.
30	Bearing Retainer	1	P4-384	1	P4-384	1	P4-384
31	Bearing Retainer Gasket	1	D11-277	1	D11-277	1	D11-277
32	Lip Seal	1	G17-84	1	G17-84	1	G17-84
33	Retaining Ring	1	G41-78	1	G41-78	1	G41-78
34	Ball Bearing	1	G40-10	1	G40-10	1	G40-10
35	Pinion Gear and Shaft	1	D37-119	1	D37-118	1	D37-116
36	Needle Bearing	1	G40-51	1	G40-51	1	G40-51
37	Gear Case	1	P49-6	1	P49-6	1	P49-6
38	Retaining Ring	1	G41-80	1	G41-80	1	G41-80
39	Drive Gear	1	D37-91	1	D37-93	1	D37-95
40	Gear Case Gasket	1	D11-305	1	D11-305	1	D11-305
41	Gear Box Cover	1	P22-25	1	P22-25	1	P22-25
42	Cover Gasket	1	D11-304	1	D11-304	1	D11-304
A	Drive Key	1	D30-9	1	D30-9	1	D30-9
AA	Pipe Plug	2	G56-12	2	G56-12	2	G56-12
AB	Oil Cap	1	G61-239	1	G61-239	1	G61-239
AC	Petcock	1	G61-71	1	G61-71	1	G61-71
AD	Socket Head Cap Screw	4	G45-050125	4	G45-050125	4	G45-050125
U	Hex Head Cap Screw	4	G49-031075	4	G49-031075	4	G49-031075
V	Lockwasher	4	G8-71	4	G8-71	4	G8-71
W	Hex Head Cap Screw	6	G49-050125	6	G49-050125	6	G49-050125
X	Flat Washer	12	G8-54	12	G8-54	12	G8-54
Y	Lockwasher	6	G8-74	6	G8-74	6	G8-74

Note:

The only two parts that are different in all three gear reduction units are #35 Pinion Gear and Shaft, and #39 Drive Gear. Be sure of the gear ratio you want parts for - 4.26:1; 4.88:1; or 5.66:1.

Pinion and Drive Gears are matched for each ratio and must be used together as a set, ie.; you can't use a 4.26:1 Pinion and a 4.88:1 Drive Gear.